

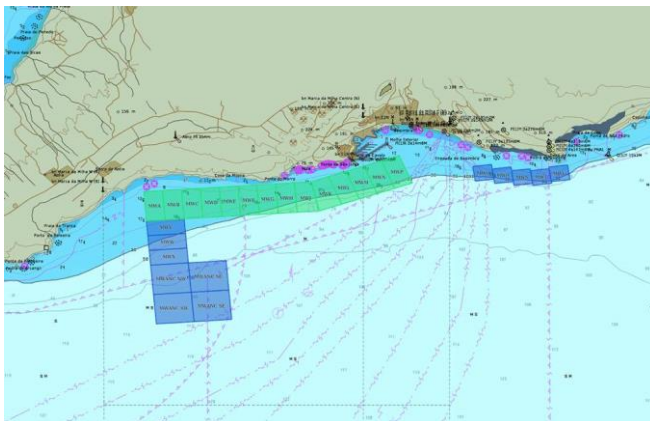
## EDITAL N.º 028/2023

### ASSUNTO: **AVISO À NAVEGAÇÃO LOCAL – EXERCÍCIO REP(MUS)23- COORDENADAS DAS ÁREAS DO EXERCÍCIO**

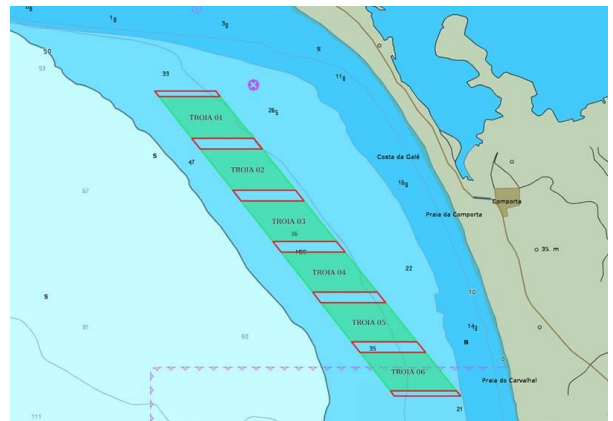
Marco Alexandre de Serrano Augusto, Capitão-de-fragata e Capitão do Porto de Setúbal, ao abrigo das competências que lhe são conferidas pela alínea h) do n.º 4, do artigo 13º do Decreto-Lei n.º 44/2002, de 02 de março, faz saber e torna público o seguinte: -----

1. No âmbito do exercício REP(MUS)23, em aditamento ao edital N.º. 025/203 publicitam-se as coordenadas geográficas das áreas onde irão decorrer as operações no espaço de jurisdição desta Capitania, entre o Espichel e o Cabo de Sines.
2. E para constar se lavrou este Edital e outros de igual teor que vão ser afixados nesta Capitania e nos locais indicados à sua divulgação. -----

Zona de Sesimbra



Zona de Tróia/Costa da Galé



Setúbal, 8 de setembro de 2023

O CAPITÃO DO PORTO,

Marco Alexandre de Serrano Augusto  
Capitão-de-fragata

Lista de coordenadas:

Name	ET_ORDER	Lat	Lon
MWA	0	38° 25,169' N	9° 9,976' W
MWA	1	38° 25,597' N	9° 10,016' W
MWA	2	38° 25,614' N	9° 9,740' W
MWA	3	38° 25,185' N	9° 9,700' W
MWV	0	38° 24,954' N	9° 9,955' W
MWV	1	38° 25,169' N	9° 9,976' W
MWV	2	38° 25,201' N	9° 9,422' W
MWV	3	38° 24,988' N	9° 9,402' W
MWW	0	38° 24,740' N	9° 9,934' W
MWW	1	38° 24,954' N	9° 9,955' W
MWW	2	38° 24,988' N	9° 9,402' W
MWW	3	38° 24,775' N	9° 9,382' W
MWB	0	38° 25,185' N	9° 9,700' W
MWB	1	38° 25,614' N	9° 9,740' W
MWB	2	38° 25,630' N	9° 9,464' W
MWB	3	38° 25,201' N	9° 9,422' W
MWE	0	38° 25,234' N	9° 8,871' W
MWE	1	38° 25,662' N	9° 8,910' W
MWE	2	38° 25,678' N	9° 8,634' W
MWE	3	38° 25,250' N	9° 8,594' W
MWP	0	38° 25,646' N	9° 6,335' W
MWP	1	38° 26,047' N	9° 6,529' W
MWP	2	38° 26,125' N	9° 6,270' W
MWP	3	38° 25,724' N	9° 6,075' W
MWQ	0	38° 25,752' N	9° 5,153' W
MWQ	1	38° 25,965' N	9° 5,189' W
MWQ	2	38° 25,994' N	9° 4,915' W
MWQ	3	38° 25,781' N	9° 4,879' W
MWR	0	38° 25,716' N	9° 4,868' W
MWR	1	38° 25,929' N	9° 4,904' W
MWR	2	38° 25,957' N	9° 4,629' W
MWR	3	38° 25,744' N	9° 4,594' W
MWS	0	38° 25,689' N	9° 4,585' W
MWS	1	38° 25,902' N	9° 4,620' W
MWS	2	38° 25,930' N	9° 4,347' W
MWS	3	38° 25,717' N	9° 4,311' W
MWT	0	38° 25,691' N	9° 4,306' W
MWT	1	38° 25,903' N	9° 4,342' W
MWT	2	38° 25,932' N	9° 4,069' W
MWT	3	38° 25,719' N	9° 4,033' W
MWU	0	38° 25,744' N	9° 4,038' W
MWU	1	38° 25,957' N	9° 4,074' W

MWU	2	38° 25,986' N	9° 3,799' W
MWU	3	38° 25,773' N	9° 3,763' W
MWX	0	38° 24,525' N	9° 9,914' W
MWX	1	38° 24,740' N	9° 9,934' W
MWX	2	38° 24,775' N	9° 9,382' W
MWX	3	38° 24,558' N	9° 9,362' W
MWANCNW	0	38° 24,098' N	9° 9,872' W
MWANCNW	1	38° 24,525' N	9° 9,914' W
MWANCNW	2	38° 24,558' N	9° 9,362' W
MWANCNW	3	38° 24,131' N	9° 9,321' W
MWANCNW	0	38° 23,669' N	9° 9,830' W
MWANCNW	1	38° 24,098' N	9° 9,872' W
MWANCNW	2	38° 24,131' N	9° 9,321' W
MWANCNW	3	38° 23,702' N	9° 9,279' W
MWANCNE	0	38° 24,131' N	9° 9,321' W
MWANCNE	1	38° 24,558' N	9° 9,362' W
MWANCNE	2	38° 24,591' N	9° 8,808' W
MWANCNE	3	38° 24,163' N	9° 8,767' W
MWANCSE	0	38° 23,702' N	9° 9,279' W
MWANCSE	1	38° 24,131' N	9° 9,321' W
MWANCSE	2	38° 24,163' N	9° 8,767' W
MWANCSE	3	38° 23,735' N	9° 8,726' W
MWC	0	38° 25,201' N	9° 9,422' W
MWC	1	38° 25,630' N	9° 9,464' W
MWC	2	38° 25,646' N	9° 9,186' W
MWC	3	38° 25,218' N	9° 9,146' W
MWD	0	38° 25,218' N	9° 9,146' W
MWD	1	38° 25,646' N	9° 9,186' W
MWD	2	38° 25,662' N	9° 8,910' W
MWD	3	38° 25,234' N	9° 8,871' W
MWF	0	38° 25,250' N	9° 8,594' W
MWF	1	38° 25,678' N	9° 8,634' W
MWF	2	38° 25,694' N	9° 8,358' W
MWF	3	38° 25,266' N	9° 8,319' W
MWG	0	38° 25,266' N	9° 8,319' W
MWG	1	38° 25,694' N	9° 8,358' W
MWG	2	38° 25,710' N	9° 8,082' W
MWG	3	38° 25,282' N	9° 8,041' W
MWH	0	38° 25,282' N	9° 8,041' W
MWH	1	38° 25,710' N	9° 8,082' W
MWH	2	38° 25,726' N	9° 7,805' W
MWH	3	38° 25,298' N	9° 7,765' W
MWN	0	38° 25,569' N	9° 6,594' W
MWN	1	38° 25,970' N	9° 6,788' W
MWN	2	38° 26,047' N	9° 6,529' W
MWN	3	38° 25,646' N	9° 6,335' W

MWM	0	38° 25,493' N	9° 6,852' W
MWM	1	38° 25,893' N	9° 7,047' W
MWM	2	38° 25,970' N	9° 6,788' W
MWM	3	38° 25,569' N	9° 6,594' W
MWL	0	38° 25,415' N	9° 7,111' W
MWL	1	38° 25,816' N	9° 7,306' W
MWL	2	38° 25,893' N	9° 7,047' W
MWL	3	38° 25,493' N	9° 6,852' W
MWJ	0	38° 25,298' N	9° 7,765' W
MWJ	1	38° 25,726' N	9° 7,805' W
MWJ	2	38° 25,741' N	9° 7,559' W
MWJ	3	38° 25,317' N	9° 7,441' W
MWK	0	38° 25,317' N	9° 7,441' W
MWK	1	38° 25,741' N	9° 7,559' W
MWK	2	38° 25,816' N	9° 7,306' W
MWK	3	38° 25,415' N	9° 7,111' W

NAME	ET_ORDER	Lat	Lon
TROIA 06	0	38° 19,858' N	8° 49,972' W
TROIA 06	1	38° 19,858' N	8° 48,690' W
TROIA 06	2	38° 19,105' N	8° 48,084' W
TROIA 06	3	38° 19,105' N	8° 49,382' W
TROIA 05	0	38° 20,840' N	8° 50,741' W
TROIA 05	1	38° 20,840' N	8° 49,472' W
TROIA 05	2	38° 20,072' N	8° 48,858' W
TROIA 05	3	38° 20,072' N	8° 50,140' W
TROIA 01	0	38° 24,070' N	8° 53,272' W
TROIA 01	1	38° 24,896' N	8° 53,919' W
TROIA 01	2	38° 24,896' N	8° 52,717' W
TROIA 01	3	38° 24,070' N	8° 52,056' W
TROIA 02	0	38° 23,860' N	8° 53,107' W
TROIA 02	1	38° 23,860' N	8° 51,888' W
TROIA 02	2	38° 23,049' N	8° 51,240' W
TROIA 02	3	38° 23,049' N	8° 52,472' W
TROIA 03	0	38° 22,840' N	8° 52,308' W
TROIA 03	1	38° 22,840' N	8° 51,072' W
TROIA 03	2	38° 22,043' N	8° 50,435' W
TROIA 03	3	38° 22,043' N	8° 51,684' W
TROIA 04	0	38° 21,834' N	8° 51,520' W
TROIA 04	1	38° 21,834' N	8° 50,267' W
TROIA 04	2	38° 21,050' N	8° 49,640' W
TROIA 04	3	38° 21,050' N	8° 50,906' W